
 NSW GOVERNMENT
 Planning & Infrastructure

 - 3 JUL 2015
 DEVELOPMENT ASSESSMENT AND
 SYSTEMS PERFORMANCE
 REVIEW - INITIAL PHASE

DO NOT SCALE

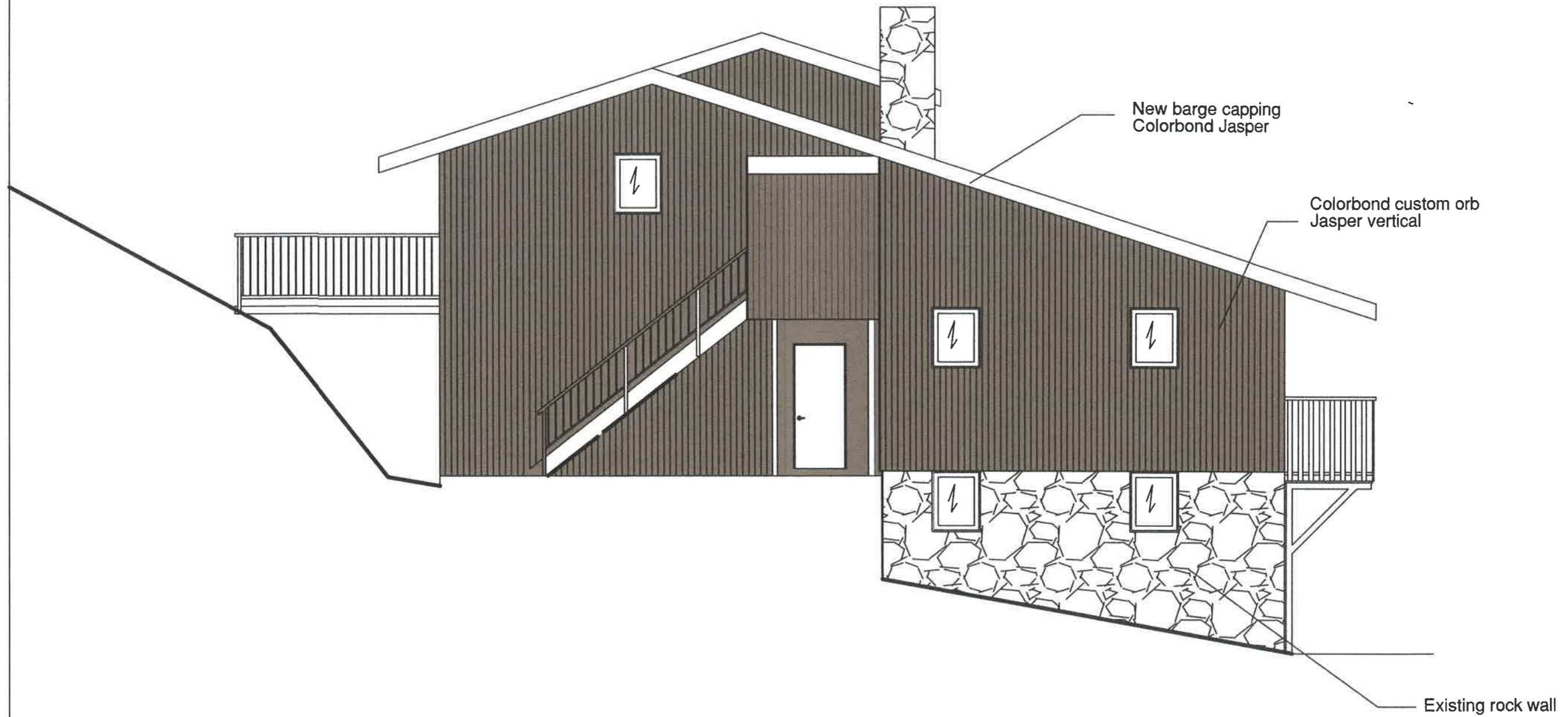


Cooma Cutting Edge Carpentry
 69 Mulach st
 COOMA NSW 2630
 0416 123 646


Site address
 Corroboree road
 Smiggin Holes
 NSW 2630

Drawing No: ACC 2015002c
 Date: 28th May 2015
 Drawn: Stephen De Witte

Client: Apex Childrens Chalet
 Project: External Cladding
 Title: North Elevation



SOUTH ELEVATION


NSW GOVERNMENT
 Planning & Infrastructure

- 3 JUL 2015
 DEVELOPMENT ASSESSMENT AND
 SYSTEMS PERFORMANCE
 BY JIM O'BRYNE

DO NOT SCALE

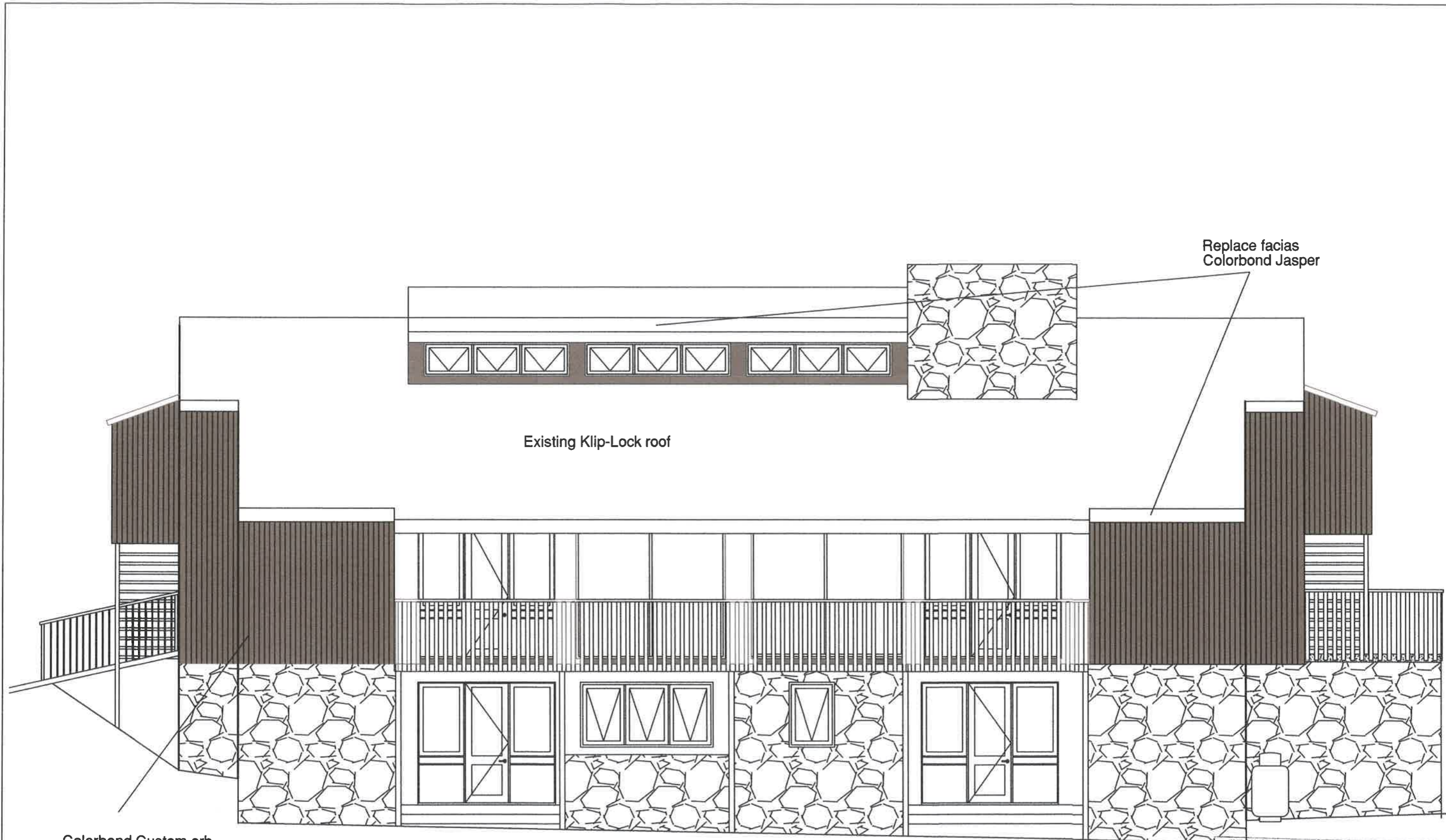


Cooma Cutting Edge Carpentry
 69 Mulach st
 COOMA NSW 2630
 0416 123 646

Site address
 Corroboree road
 Smiggin Holes
 NSW 2630

Drawing No: **ACC 2015001c**
 Date: 28th May 2015
 Drawn: Stephen De Witte

Client: **Apex Childrens Chalet**
 Project: **External Cladding**
 Title: **South Elevation**



Replace facias
Colorbond Jasper

Existing Klip-Lock roof

Colorbond Custom orb
Jasper vertical

EAST ELEVATION

NSW GOVERNMENT
Planning & Infrastructure
- 3 JUL 2015
DEVELOPMENT ASSESSMENT AND
SYSTEMS PERFORMANCE
RECEIVED - JINDABYNE

DO NOT SCALE

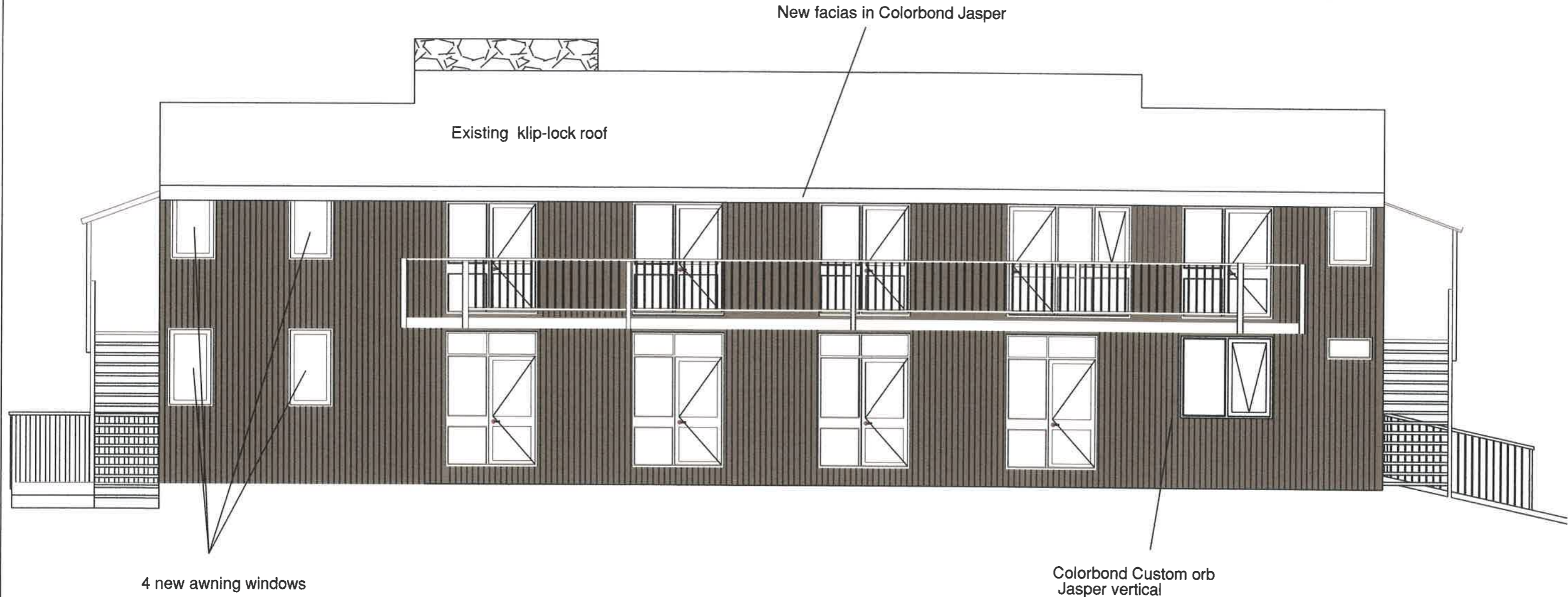


Cooma Cutting Edge Carpentry
69 Mulach st
COOMA NSW 2630
0416 123 646


Site address
Corroboree road
Smiggin Holes
NSW 2630

Drawing No: ACC 2015003c
Date: 28th May 2015
Drawn: Stephen De Witte

Client: Apex Childrens Chalet
Project: External Cladding
Title: East Elevation



WEST ELEVATION


 NSW GOVERNMENT
 Planning & Infrastructure

 - 3 JUL 2015
 DEVELOPMENT ASSESSMENT AND
 SYSTEMS PERFORMANCE
 RECEIVED - JINDABYNE

DO NOT SCALE



Cooma Cutting Edge Carpentry
 69 Mulach st
 COOMA NSW 2630
 0416 123 646

Site address
 Corroboree road
 Smiggin Holes
 NSW 2630

Drawing No: **ACC 2015004c**
 Date: 28th May 2015
 Drawn: Stephen De Witte

Client: **Apex Childrens Chalet**
 Project: **Extrenal Cladding**
 Title: **West Elevation**